



Florida Gold Coast Gem and Mineral Society

The Golden Nugget Newsletter



February 2025, Vol. 36 Issue 1

Next Monthly Meeting:

- Our next meeting will be February 19th 2025, at 7:30 PM at the “Ye Olde Rock Shoppe” 1425 S 30 Avenue Suite C Hollywood Florida 33020.”
Reminder: “Ye Olde Rock Shoppe” will donate 50% of your member purchase back to the club.

Monthly Program:

This month’s program will be presented by Jeff Gross, **Titled: Youth and FGCGMS**
Jeff Gross will present some of the ways our club could get involved with the younger members in our community. Scouting America group and the Hallandale Public Library have both reached out regarding interest in our topics. Join us and express your opinion on this possible future venture.

INSIDE THIS ISSUE: MONTHLY MEETING MINUTES:

1. Next Meeting	Date:	1/15/2024
Monthly Meeting	Time Start:	7:45pm
Inside This Issue - Monthly	Time Ended:	9:30pm
Meeting Minutes	Minutes taken By:	Susan Anderson
2. Other Agenda Items	Previous Months	Julio Lopez
3. Editorial	Minutes Accepted by:	
4. February Birthstone	Attending Officers:	Julio Lopez, President Don Titman - VP Susan Anderson - Secretary
Amethyst		Beverly Norona/ Stephanie Struss – Treasurer
9 Mineral Identification tips	Guest/New Members:	No New Guest
15 On the puny side		
16 Calendar of Events		
17 Club Info, List of Officers,		
18 Advertisers		
19 Program Presenter form		



Treasurer’s Report:	Beverly indicated that the bank has 2302.63 and there is \$340.50 in petty case.
Other Notes/ Reports	17 members attended, \$78 in raffle
Shop Report:	Prior to the regular meeting, the Board of Directors convened for their first meeting of the year. During this session, they unanimously approved the budget forecast and decided to temporarily close the shop. This closure will save the club \$685 in monthly rent, allow for equipment storage until the club's finances are stable, increase member interest in shop classes, and provide time to search for a more suitable shop location.
Committee Reports:	Jeff Gross agreed to become program chair.
Program Presentation By:	Lauren Kairella from the Miami Club gave an incredible presentation on Fluorescent and Luminescent Minerals. Her energy was contagious, making the topic come to life—almost like the rocks themselves were glowing! (pun intended). The audience was full of "uh's" and "ahh's," showing just how captivating it was. Thank you, Lauren! We'd love to see you do this again soon.



Florida Gold Coast Gem and Mineral Society

The Golden Nugget Newsletter



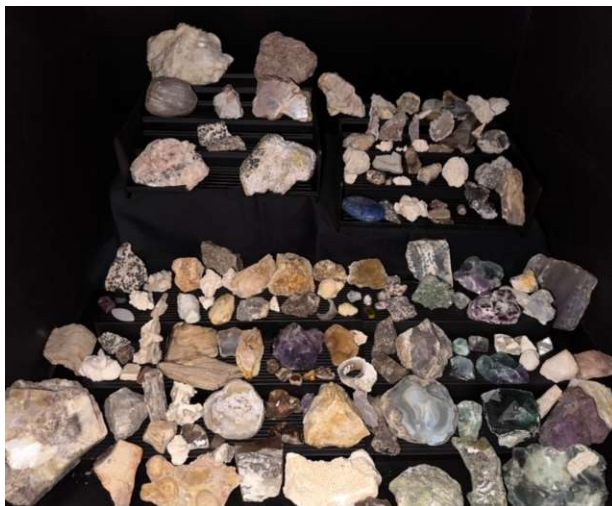
February 2025, Vol. 36 Issue 1

On other Agenda topics:

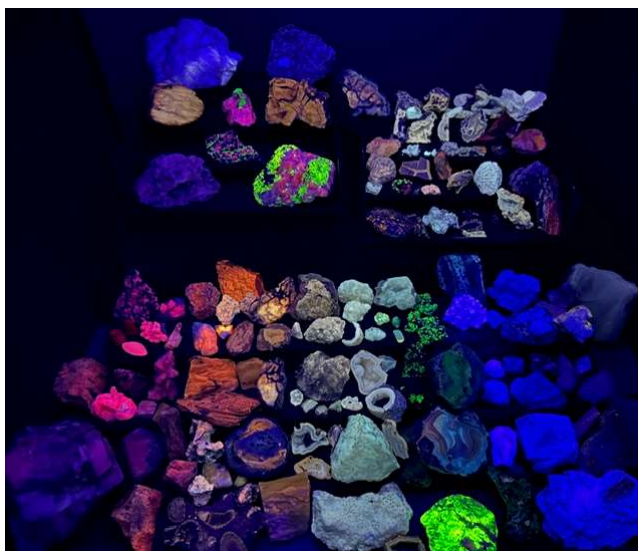
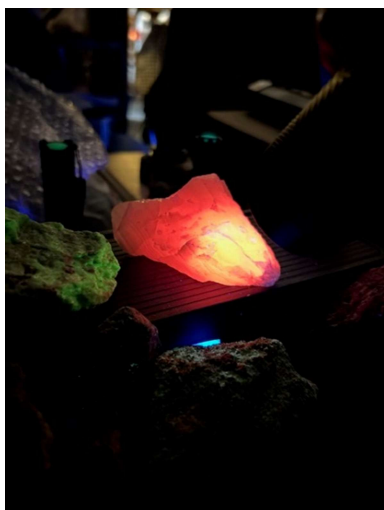


Over 500 minerals have been discovered that exhibit some sort of fluorescence when exposed to ultra violet light. (The Fluorescent Mineral Society).

Enjoy these photos



White Light



UV Light



Florida Gold Coast Gem and Mineral Society

The Golden Nugget Newsletter



February 2025, Vol. 36 Issue 1

Editorial:

I'm pleased to report that the Board of Directors has unanimously agreed to adopt the 2025 budget forecast and has made the difficult decision to temporarily close the shop. While this decision was not made lightly, it was necessary in light of the financial realities. The shop is **vital** to our members—it is a central part of how we recruit new members and keep existing ones engaged in the lapidary arts.

Closing the shop, even temporarily, was a challenging choice to present to both the Board and our members. However, after carefully reviewing the forecast numbers, it became clear that with the current high rent and insufficient profit, the closure was the most sensible course of action.

I want to reassure our members and especially the members that my efforts and the Board's primary focus this year is to bring the shop back as soon as possible. We will work diligently to find a more affordable and suitable location to ensure the shop can reopen very soon and continue serving our community and the club.



Florida Gold Coast Gem and Mineral Society The Golden Nugget Newsletter



February 2025, Vol. 36 Issue 1

FEBRUARY BIRTHSTONE Amethyst(Source GIA)



If you were born in February, your birthstone is amethyst – the purple variety of quartz that has captivated mankind for millennia. Its lilac to deep purple hues can be cut into many shapes and sizes, and it can be manufactured in a lab as well as mined. Amethyst, the February birthstone, can be found in the collections of royal families throughout Europe and Asia. Now it's within reach of most consumers. Consider buying a stunning amethyst for the king or queen of your heart – or treat yourself to a royal present. If your birthday is in February, then wearing an amethyst can also be a symbol of personal empowerment and inner strength.

Amethyst Birthstone Meaning & History

The name “*amethyst*” derives from the Greek *amethystos*, which means “a remedy against drunkenness,” a benefit long ascribed to the purple birthstone. Because of its wine-like color, early Greek mythology associated the gem with Bacchus, the god of wine. Amethyst was also believed to keep the wearer clear headed and quick witted in battle and business affairs. Renaissance Europeans thought it calmed lovers overrun by passion.

Amethyst is the gem traditionally given for the sixth wedding anniversary. Wear it in celebration of your wedding nuptials or as your February birthstone and you'll be in royal company: Catherine the Great (Empress Catherine II of Russia, 1729–1796) had a penchant for the gem and decked herself in amethyst necklaces, earrings and other ornaments. The famous jewelry connoisseur Wallis, Duchess of Windsor (1896–1986), made a memorable statement when she wore a lavish Cartier-designed amethyst bib necklace to a gala in Versailles in 1953.



Florida Gold Coast Gem and Mineral Society The Golden Nugget Newsletter



February 2025, Vol. 36 Issue 1



GIA.edu

The Duchess of Windsor's bib-style necklace boasts 28 step-cut amethysts, one oval faceted amethyst, and a large heart-shaped amethyst in the front, as well as turquoise cabochons and brilliant cut diamonds, all suspended from a rope-like gold chain. Courtesy: N. Welsh, Cartier Collection © Cartier

Historically, royals have admired the deep purple hue of the February birthstone since at least the days of Alexander the Great. Amethyst lore also includes several claims to mystical powers, including that it would convey strength and wit to those who wore it. If you celebrate a February birthday, wearing an amethyst can be a symbol of personal empowerment and inner strength.

Where is Amethyst Found?

Russia was the major source of amethyst until the 19th century, when large deposits were found in Brazil. Once as rare as ruby or emerald, amethyst was suddenly in abundance. Today, the most important sources of amethyst are in Africa and South America. Brazil is still a major supplier, especially its southernmost state, Rio Grande do Sul, though the rough amethyst mined there tends to have a lighter color than amethyst found in other countries. Amethyst from Brazil sometimes forms in hollow, crystal-lined geodes so large you can stand in them.

The Anahí mine in Bolivia is another prominent source for amethyst. Hidden in the Pantanal wetlands, the Anahí mine is shrouded in fascinating lore. It was discovered by a Spanish conquistador in the 1600s, given to him as dowry when he married Anahí (a princess from the Ayoreo tribe), forgotten for three centuries, and rediscovered in the 1960s. The Anahí mine is also famous in gem circles as the source of the unusual bicolored amethyst-citrine crystals called ametrine.



Florida Gold Coast Gem and Mineral Society

The Golden Nugget Newsletter



February 2025, Vol. 36 Issue 1



A treasure trove of amethyst and ametrine crystals line the walls of Bolivia's historic Anahí mine. Photo: Robert Weldon/GIA

In Africa, Zambia's Kariba mine is one of the largest amethyst producers in the world. Amethyst mined there tends to be of superb quality with richly saturated colors.

Amethyst is also found in the United States, just 46 miles (74 km) outside of Phoenix, Arizona. The Four Peaks amethyst mine is located high in the most rugged part of the Mazatzal Mountains. A remote location, hot summer temperatures, and a lack of water and power at the mine make for challenging conditions. Yet this jagged, arid, rattlesnake-infested terrain produces some very fine dark purple and purplish red amethyst crystals.



The Four Peaks amethyst mine is in a remote area northeast of Phoenix, Arizona. Photo: James Shigley/GIA
Amethyst Birthstone Care & Cleaning



Florida Gold Coast Gem and Mineral Society

The Golden Nugget Newsletter



February 2025, Vol. 36 Issue 1

Amethyst is a 7 on the Mohs scale of hardness. This means that it is appropriate for daily use in rings and other jewelry, but over time it may show wear and require repolishing. Because this February birthstone is more susceptible to damage than harder gems such as rubies, sapphires and diamonds, you risk scratching your amethyst jewelry if you place it next to these harder stones...

Heat treatment is the most common technique for improving the color and marketability of natural amethyst. Heat treatment can't make pale amethyst darker, but it can lighten the color of very dark amethyst and make it more attractive. It can also remove unwanted brownish inclusions in some amethysts. Some amethyst turns yellow – to citrine – with heat treatment.

Heat treating amethyst results in a permanent change in color. However, submitting it to intense heat may render it slightly more brittle than usual, and care must be taken not to damage pointed faceted corners and sharp edges. Note, too, that excessive heat can remove the color entirely, and some amethyst fades with prolonged exposure to strong light. Though the color is stable with normal use, this is not a birthstone to wear to the beach every day.

Amethyst birthstone jewelry can be cleaned with an ultrasonic cleaner, but steam cleaning is not recommended. A soft brush with mild soap is the safest option.

As you shop for the February birthstone, you'll also encounter lab-created amethyst. Having the same chemical and physical properties as its natural counterpart, synthetic amethyst has been known since the 1970s. In some cases, it is very difficult to distinguish natural from synthetic amethyst without access to advanced gemological testing. The GIA Laboratory can tell the difference, but many in the jewelry industry do not request testing because of the cost and time required to determine the origin of what is a comparatively inexpensive gem. Still, merchants are required to tell you if a gem is natural or synthetic.



GIA.edu

This amethyst and diamond ring set in recycled 18k gold is part of the Galaxy Collection, designed by Arya Esha. Courtesy: Arya Esha



Florida Gold Coast Gem and Mineral Society

The Golden Nugget Newsletter



February 2025, Vol. 36 Issue 1

OCTOBER BIRTHSTONE – continued

Crystal Energy: Connecting with your Spiritual Side: Amethyst and Chakras



Amethyst is known for its strong connection to spirituality and its ability to provide clarity and insight. It is associated with both the Third Eye and Crown chakras, promoting spiritual growth, intuition, and higher consciousness. By opening the third eye and crown chakra, amethyst activates spiritual awareness, encouraging spiritual advancement, instinct, and heightened awareness. Many cultures have associated spiritual overtones with this gem, believing that it can enhance intuition and psychic abilities, making it an ideal tool for spiritual awareness and spiritual growth.

During meditation, amethyst can be held in the left hand or positioned over the Third Eye to help calm the mind and deepen spiritual connections. You can also create a tranquil atmosphere in your meditation space by incorporating large amethyst clusters and using them to harness the stone's calming energy. By incorporating amethyst into your meditation practices, you can enhance your spiritual journey and develop a deeper connection to your inner wisdom.

Amethyst is not only treasured for its spiritual properties, but also for its physical healing properties and amethyst metaphysical properties. It is believed to help with anxiety, depression, clear the mind, wash away toxic thinking, encourage solid sleep patterns, and ease tension and headaches. By incorporating amethyst healing properties into your daily life, you can experience its remarkable benefits and enjoy a greater sense of inner peace and spiritual connection.

Harnessing Amethyst's Healing Powers

Amethyst is well known for its healing powers. It helps in promoting good health on all fronts - physical, mental and spiritual. Physically, amethyst is known to bolster the immune system, reduce tension and headaches, and promote restful sleep. Mentally, its effects include alleviating worries and fears, encouraging clear thinking, and trusting one's intuition. On a spiritual level, amethyst is able to open the crown chakra and foster connections to higher energies, making it an ideal stone for those seeking inner peace, spiritual growth, and protection from negative energies.

Commonly referred to as the "healing tranquilizer," amethyst provides a sense of calmness and aids in accepting one's destiny with contentment. Its deep spiritual energy facilitates spiritual growth and awareness, making it an essential tool for daily energetic maintenance and eliminating mental distractions. By harnessing the healing powers of amethyst, you can experience an improved sense of well-being, emotional balance, and a deeper connection to your spiritual self.

To fully benefit from amethyst's healing properties, consider incorporating it into various aspects of your life, such as wearing amethyst jewelry, using it in meditation practices, or placing it in your home or workspace. By surrounding yourself with the calming energy of amethyst, you can enhance your overall well-being and experience the transformative power of this remarkable healing stone.

Source - AI Overview



Florida Gold Coast Gem and Mineral Society

The Golden Nugget Newsletter



February 2025, Vol. 36 Issue 1

What is it? (Section of Rock and Minerals Identification)

Tip #8– Cleavage, fracture and parting

The properties of cleavage, parting, and fracture describe how a crystalline material responds to external forces. When a force, such as a hammer strike, is applied to a mineral, it experiences stress. Depending on the mineral's internal structure, the result could be cleavage, fracture, or parting. Minerals with weaker bonds tend to cleave, while those with stronger bonds are more likely to fracture. To fully understand these physical properties, one would need to delve into bond strength, which goes beyond the scope of this explanation. However, we often use terms like "weak" or "strong" to describe these bond types and their effects on a mineral's behavior.

Cleavage: Cleavage refers to a mineral's ability to break easily along certain planes. Perfect or well-developed cleavage occurs when a mineral breaks smoothly and precisely along its atomic planes. Micas, such as Muscovite and Biotite, are prime examples of minerals with perfect cleavage. When cleavage results in distinct shapes, terms like cubic, octahedral, rhombohedral, or prismatic are used to describe the fragments. The pattern and angles of cleavage can provide important clues about a mineral's atomic structure. For example, salt exhibits perfect cubic cleavage, breaking along three planes to consistently form cubes.

Terms Used to Describe Cleavage

basal

well developed planar cleavage in one direction only; also sometimes called "platy" (micas)



Muscovite, Biotite

cubic

three cleavages at 90° to each other (galena)



Halite



Galena



Florida Gold Coast Gem and Mineral Society

The Golden Nugget Newsletter



February 2025, Vol. 36 Issue 1

rhombohedral

Cleavage in three directions not at right angles (120° and 60°).



Calcite

octahedral

four cleavages that produce 8-sided cleavage fragments (fluorite)



prismatic

multiple directions of good cleavage all parallel to one direction in the crystal (tremolite)



Schorl – Black Tourmaline



Florida Gold Coast Gem and Mineral Society

The Golden Nugget Newsletter



February 2025, Vol. 36 Issue 1

Fracture:

In some crystal structures the strength of the bonds is approximately the same in all directions. Breaking of such crystals general will not follow a particular direction or planes. Fracture patterns can be distinctive and highly diagnostic in mineral identification. Seven types of fractures are recognized in mineralogy: conchoidal, earthy, hackly, splintery, uneven factures, uneven/irregular.

conchoidal

breaking with curved surfaces as in the manner of glass (quartz, obsidian, flint)



earthy

An earthy fracture is a type of mineral fracture that produces a texture similar to broken soil. It's often seen in soft, loosely bound minerals. (Limonite,



hackly

fracturing to produce jagged surfaces and sharp edges (copper)





Florida Gold Coast Gem and Mineral Society

The Golden Nugget Newsletter



February 2025, Vol. 36 Issue 1

splintery

forming sharp splinters (kyanite)



Actinolite

fibrous

forming fibrous material (chrysotile, crocidolite)



Crysotile Asbestos (Serpentine)

uneven / irregular

breaking to produce rough and irregular surfaces (rhodonite)



Rhondite



Florida Gold Coast Gem and Mineral Society

The Golden Nugget Newsletter



February 2025, Vol. 36 Issue 1

Parting:

Parting is a property that often gets confused with cleavage, and there is good reason for that. Parting is a break along structural planes and is parallel to a possible face, just like cleavage. However, parting differs from cleavage in some important ways. It cannot be found in every specimen as is true of cleavage for most every cleavable mineral. It is not absolutely repeatable or reproducible as is cleavage down to theoretically the very atomic layers that cause cleavage. Structural weakness such as twinning lead to the mineral breaking along the defect and compositional planes.

Most parting is seen as fracture lines that are incomplete or healed (the crystal continued to grow and sealed the break) and might appear as striations or planes of concentrated inclusions. The picture above is of a ruby crystal with rhombohedral parting appearing as thin, crisscrossing, pale colored planes (note how they parallel the "face" at the top). As stated above, parting is not a consistent property, but when it is seen, it can be an aid in identification. Some mineralogists have suggested that parting is nothing more than just very poor cleavage and there is some evidence to support that. Parting types are named

Terms Used to Describe Fracture (and example minerals)

basal
Pyroxenes, Tourmalines,
Zincite, Monzanite,
Parisite



Monzanite



Augite



Florida Gold Coast Gem and Mineral Society

The Golden Nugget Newsletter



February 2025, Vol. 36 Issue 1

octahedral

A closed crystallographic form with eight faces that are equilateral triangles.



Chomite

rhombohedral

a type of mineral fracture where a crystal breaks along planes of weakness that create a rhombohedral shape,



Corundum)



Florida Gold Coast Gem and Mineral Society The Golden Nugget Newsletter



February 2025, Vol. 36 Issue 1

On the Puny Side:

I know I got off to a rocky start but reading through this list of puns will make you "boulder". Here are some more.

- **I'm going to look for gems this weekend,**
I may need your assi-stones
- **"You're a real gem!!**
I also think you've got a rock-solid personality!"
- **What should you do when you hear a bad joke about rocks?**
Take it with a grain of basalt
- **These rock puns are real gems, don't you think?**
Of quartz they were!, or you did not get the schist of them



Florida Gold Coast Gem and Mineral Society

The Golden Nugget Newsletter



February 2025, Vol. 36 Issue 1

Calendar of Events

January 15 th 2025, Wednesday,	Board of Directors Meeting – 6:00 pm Ye OldeRock Shoppe
January 15 th 2025, Wednesday	FGCG&M Society's Monthly Meeting
February 8th and 9th, 2025, Saturday and Sunday	FGCGMS Rock Sale – Don Titman House Corals, Agates, Jaspers, Jade, Some Lapidary Equipment
February 19, 2025, Wednesday	FGCG&M Society's Monthly Meeting
March 26, 2025, Wednesday	FGCG&M Society's Monthly Meeting
April 16 th 2025, Wednesday	FGCG&M Society's Monthly Meeting
April 27th 2025, Sunday,	Tri county Club picnic at TY Park
May 21 st 2025, Wednesday	FGCG&M Society's Monthly Meeting
June 18 th 2025, Wednesday	FGCG&M Society's Monthly Meeting
July 16 th 2025, Wednesday	FGCG&M Society's Monthly Meeting
August 20 th 2025, Wednesday	FGCG&M Society's Monthly Meeting
September 17 th 2025, Wednesday	FGCG&M Society's Monthly Meeting
September 28th 2025, Sunday	Tri-county Picnic
October 15 th , 2025, Wednesday	FGCG&M Society's Monthly Meeting At this meeting, the club will open the officer and board of director nominations to the club membership.
November 18 th 2025, Wednesday	FGCG&M Society's Monthly Meeting At this meeting the club will accept Officer and Board of Directors nominations from the floor, close the nomination process, create the slate of candidates and start election procedure
December 17 th 2025, Wednesday	Monthly meeting and Christmas Party. Announcements of Officers, This month's meeting will be a special one as we celebrate our Annual Christmas Party! We hope you can join us for an evening of fun and festivities and great food. <ul style="list-style-type: none"> • What's in store: <ul style="list-style-type: none"> • Exciting Raffle • Fun Auction • Awards and Recognitions



Florida Gold Coast Gem and Mineral Society

The Golden Nugget Newsletter



February 2025, Vol. 36 Issue 1

2025 Snack Volunteers

January	Julio Lopez
February	Steve Ackerman
March	Stephanie Strauss
April	Beverly Norona
May	Susan Anderson
June	Ernest Ashurst
July	
August	Ariel Helman
September	
October	
November	Dick Haliburton
December	Christmas Party – No Volunteer(s) needed

Please contact Ariel Helman @ 305-335-4405 for changes.

Club Info:

Club's Email: floridagemmineral@gmail.com
 Club's Website: <http://www.fgcgms.org>
 Club Facebook Page: [Florida Gem & Mineral Society](https://www.facebook.com/FloridaGem&MineralSociety)
 Federation Website: <http://www.amfed.org/sfms>
 Instagram: floridagemmineral – follow us on Instagram
 Mailing Address: 8783 NW 142 Lane, Miami Lakes, FL 33018

List of Officers:

Function	2 nd Function	Name	Phone Number	E-mail Address	2 nd E-mail Address
President	Database Manager	Julio Lopez	786-603-8081	floridagemmineral@gmail.com	juliolp2059@gmail.com
Vice President	Shop Foreman	Don Titman	305-502-4345	nolewake@yahoo.com	
Shop Foreman	Program Committee	Lucas Bush	954-588-6323	snugglefish22@gmail.com	
Secretary	Program Committee	Susan Anderson	954-559-9198	poochiepawlor@aol.com	pochiepawlor@aol.com
Treasurer		Beverly Norona Stephanie Strauss	954-205-5815 954-558-0559	bevn12345@aol.com stephanielynn.strauss@gmail.com	
Sunshine Chair		Mirtha Rimarachin	954-948-7657	mrmarac88@gmail.com	
Member Committee		Vacant			
Refreshment Committee		Ariel Helman	305-335-4405	arielh305@gmail.com	
Game Master / Quiz Committee		Dick Haliburton	954-249-0365	dickhaliburton@gmail.com	
Newsletter Committee		Vacant			
Newsletter Committee		Jeffrey Gross	954-987-0645	jgrossarchitect@gmail.com	



Florida Gold Coast Gem and Mineral Society The Golden Nugget Newsletter



February 2025, Vol. 36 Issue 1

Advertisers:

Ye Olde Rock Shoppe



Ye Ole Rock Shoppe
1425 S 30 Avenue, Suite C,
Hollywood, FL 33020
954-295-0606, 954-610-8084
Yeolderockshoppe@comcast.net
<https://yeolderockshoppe.com>

The Crystal Cave Rock and Gem Shop



Crystal Cave Rock and Gem Shop
6835 Stirling Road,
Fort Lauderdale Florida 33314,
<https://thecrystalcaverockandgemshop.com>
Phone: (954) 585- 8988 Fax: (954) 585-8988
Email: jackiescrystalcave@att.net



Poochie Pawlor – By Susan Anderson
1621 N. Hiatus Road, Pembroke Pines FL 33026



Florida Gold Coast Gem and Mineral Society

The Golden Nugget Newsletter



February 2025, Vol. 36 Issue 1

IF YOU HAVE ARRANGED A SPEAKER FOR THE CLUB MEETING, PLEASE BE SURE ALL OF THE INFORMATION NOTED BELOW IS INCLUDED.

Email the form to the newsletter editor at floridagemmineral@gmail.com

Month the speaker will be speaking:

First Name

Last Name

Title or Self Identifier: (for example rock hound, Geologist, whatever the person calls him/herself.)
(no more than five words)

Type self-description here:

Title of Program:

Short paragraph on content of presentation:

Biographical information on presenter:

Phone number of speaker in case further information is needed:

Name of person submitting this form: